

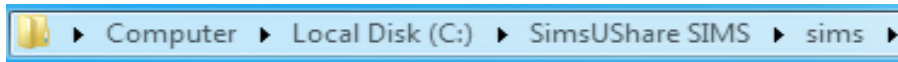


## Sharing Simulations How-To

### NLRFD

#### **Simulation Local Save Location:**

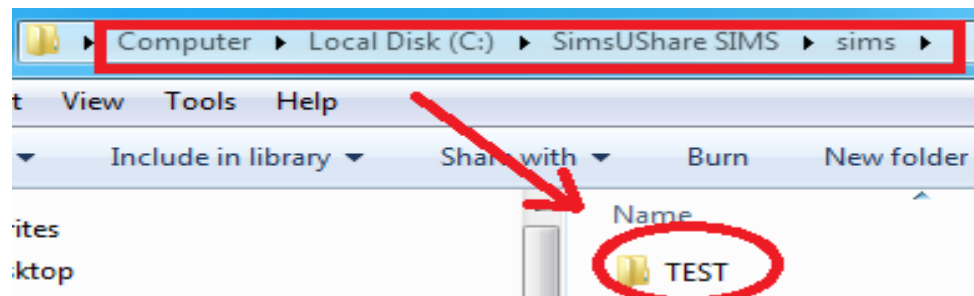
When a simulation is created, it is saved to your local workstation. It is important to know where this location is on your PC so you can share it with others. When you create a new simulation a folder with the name of the simulation is created at the following location:



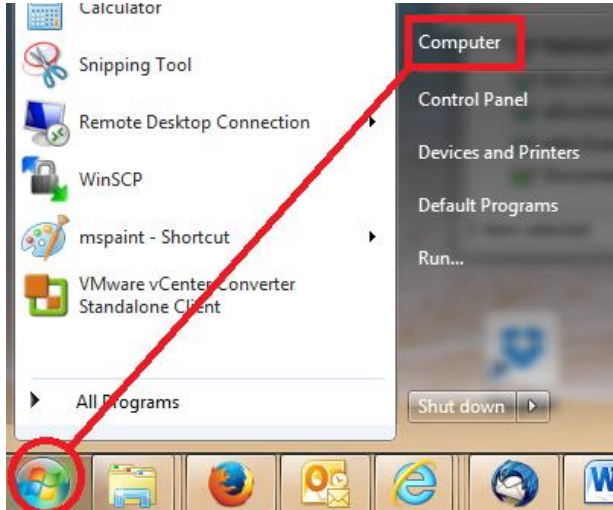
All simulations you create will be located here. The folders here will be named after the name of the simulation (preferably STREET ADDRESS). The folder created for your simulation contains all the data required for the simulation to run within SimsUShare. This is the folder that you will copy and share with others.

#### **Simulation Network Share Location:**

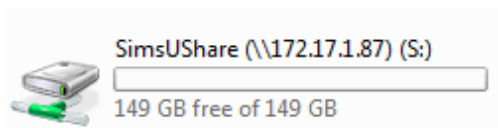
After your simulation is completed and saved, you can copy it to a Network Share to be approved by the Chief and Training Personnel. Once approved, they will copy it to the LIVE folder, which can then be played over the Network by the SimsUShare program on your workstation. For this example a simulation named TEST has been created. First, locate your simulation by following the path above:



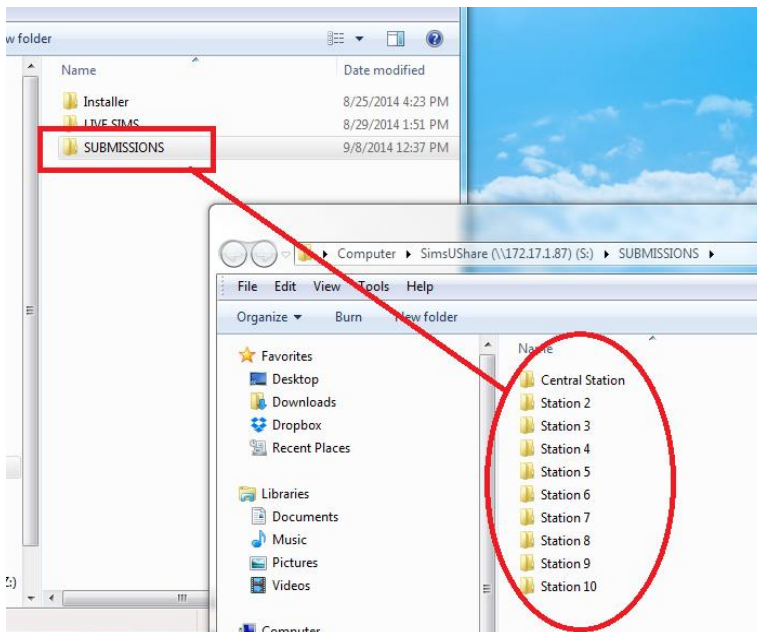
Right click on the simulation folder and select Copy. Navigate to the Network Share on your PC (Start > Computer):



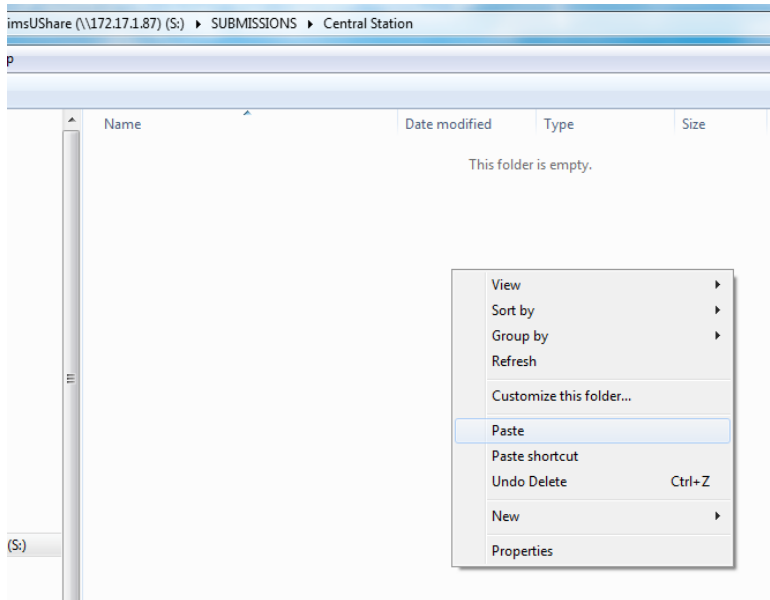
Click on Computer. Locate the Network Share. It will be located under Network Locations:



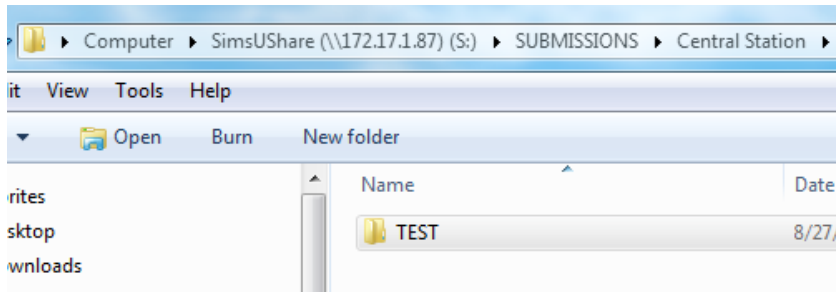
Double click the Network Share. Double click SUBMISSIONS and then double click the appropriate station folder:



Double click your station folder and right click within the white space and select PASTE:



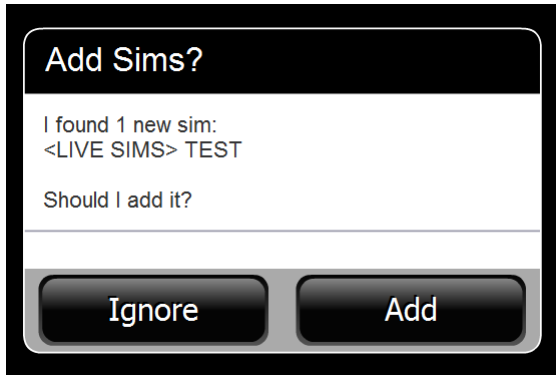
Your simulation will then be copied to the Network Share:



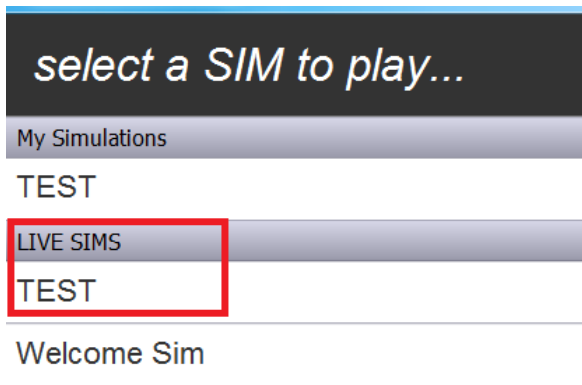
**Playing Simulations on the LIVE SIMS Network Share:**

All approved training simulations will be stored in the LIVE SIMS Network Share folder. Once they are approved and copied to this folder by Training Personnel, they will be available for every location with workstations that have SimsUShare installed. The SimsUShare software has been configured to look for simulations in this folder each time the program is started. This is done automatically.

For this example, let us assume the LIVE simulation was approved and copied to the LIVE SIMS Network Share by Training Personnel. When opening SimsUShare it will automatically locate the approved simulation in the LIVE SIMS folder and ask if you would like to add it:



Click ADD. This will add the new simulation to your LIVE SIMS play folder. Once at the main menu, select PLAY and you will now see it in the LIVE SIMS play list:



Click on the simulation to play.

NOTE: The simulations in the LIVE SIMS folder will be marked as PLAY ONLY, meaning only Administrative and Training Personnel can change and/or edit the simulation after submission and approval.

If you have any questions, please contact Capt. Barton or myself at [NDicus@nlr.ar.gov](mailto:NDicus@nlr.ar.gov).